



HURRICANE PREPAREDNESS GUIDE

BUILD A BASIC DISASTER SUPPLY KIT

RECOMMENDED BY THE NATIONAL HURRICANE CENTER TO STOCK THE FOLLOWING:

- Water: one gallon of water per person, per day, for at least three days
- Food: at least a three-day supply of non-perishable food
- Battery-powered or hand crank radio, a weather radio, and extra batteries
- Flashlight and extra batteries
- First aid kit
- Moist towelettes, garbage bags, & plastic ties
- Feminine supplies & personal hygiene items
- Manual can opener for food
- Local maps
- Cell phone with chargers, backup power bank, inverter, or solar charger
- Cash
- Important family documents such as copies of insurance policies, identification, etc.

Persons with Disabilities, Barriers or Impairments

By evaluating your own personal needs and making an emergency plan, you can be better prepared for any situation. Inventory what you use every day to live independently. Identify the essential items you will need for at least three days. Stock custom essentials in your kit like:

- Durable medical equipment
- Assistive technology
- List of medications
- Contact information for doctors
- Have a method to communicate your impairments and needs

Pet Disaster Supply Kit

- Current rabies vaccination certificate
- Shot records
- Leash and collar
- County animal license tags
- Medications
- Crate or cage for each animal
- Pet food
- Cleaning supplies
- Newspaper or pet pad
- Comfort items for your pets

Rotate Supplies

Review and change out your supplies before and after hurricane season each year to ensure your information is up to date, and you have enough food that your whole family will like to eat if necessary.





BEFORE THE STORM



Make A Plan

Make sure to think about things such as: Where will you go? Will you evacuate? What route will you take? What supplies do you need? It is important to make sure you have all of these details in place before a storm approaches.

- Have a supply kit ready.
- Have either a shelter or evacuation plan in place.
- Stay informed before, during, and after a disaster or emergency.

Build A Kit

Have a hurricane supply kit ready with enough food, water and medications for you and your family for at least 3 days. If you have pets, include supplies for their needs as well. Keep important documents such as copies of insurance policies, identification, and medical information in an easily accessible place in the event you need to evacuate.



Home Preparation

Hurricanes create a tremendous amount of debris that often takes weeks or months to collect. You can help reduce the amount of debris — and the time it takes for all of it to be collected — by keeping your yard and fence maintained before a storm is in the forecast.

Check Trees

Remove any dead limbs, branches and palm fronds from trees. Trim them back if needed. Do not leave trimmings outside within 24 hours of a storm.

Check Fencing

Older fences could be rotted or unstable and may be ripped from the ground in high winds. A dangerous warning sign is if the fence wobbles in relatively strong gusts.

Perform regular maintenance. Look for loose or weak boards and nail or replace them as necessary.

School Closure Procedures

In the event of a weather emergency, the superintendent of Brevard Public Schools (BPS) is the only person who will give the directive that schools are to close due to extreme weather conditions. Should the district close, BPS will communicate the closure to parents, teachers and staff through their rapid notification system. This will come in the form of voicemail and email. Those who have registered their cell phone number will receive a text message.

- Follow Brevard Public Schools on [X \(@BrevardSchools\)](#), [Facebook \(Brevard Public Schools Official\)](#), or [Instagram \(brevardschools\)](#)
- For more information, please visit www.brevardschools.org

PREPARE YOUR HOME

These simple inexpensive steps will help make your home storm ready.

Protect Your Windows

Your best option is to install impact resistant windows or hurricane shutters. Otherwise, be ready to cover your windows with commercial exterior plywood- 7/16" minimum- when a storm is approaching.

Brace Your Gabled Roof

Gabled roofs- two slopes that come together to a peak at the top- are prone to failure if not properly braced in construction. High winds could cause your end wall to collapse.



BRACE YOUR GARAGE DOOR

Old garage doors in good condition can be braced with retrofit kits while new doors must meet stringent wind requirements. After Hurricane Andrew, engineers determined four out of five homes that suffered major structural damage lost their garage door first.

CHECK SEALS

Replace any worn out weather stripping or caulk around windows and doors.

PREPARE YOUR VEHICLE

- Keep up with your car's maintenance
- Keep gas tank half full- fill tank or EV charge during a Hurricane Watch
- Build a survival kit for your car: first aid, non-perishable food/water, tire inflator, tool kit, jack and spare tire, jumper cable, road flares, flashlight, DC/AC power inverter, mobile device chargers.



HOME PREPARATION IF A HURRICANE OR STRONG STORM IS IN THE FORECAST



- Remove any items that aren't secured to the ground such as lawn furniture or trampolines. Loose items like decorations and flags should be taken inside until the storm passes.
- Check for and remove trash and yard debris. These items can get blown around by strong winds and damage property. This sort of debris could also get caught up in storm drains and canals and increase the potential for flooding.



Once the storm is expected to make landfall within 72 hours: **DO NOT** cut down trees or vegetation or do any major yard work. Mass cutting places a tremendous burden on the normal solid waste collection process, and collection of this debris a few days prior to landfall of the storm is not guaranteed. During a Watch or Warning period **DO NOT** place materials at the curb or take materials to the landfill or transfer facility. Services may be suspended, and facilities may close early to prepare for the storm.



⚠ DEBRIS HAZZARD ⚠

- Bring garbage cans into the garage if possible. If they must remain outside, make sure they are in a sheltered, secured location.
- Turn off automatic sprinklers.
- If you plan to evacuate**, shut off your main house water valve to prevent damage to your home.
- Brevard County Emergency Management may announce sandbag distribution locations in preparation for a storm. Sandbags are not necessary for every home and need to be used correctly to provide any kind of protection. Empty sandbags and fill materials can be found at local hardware stores.
- Bags of potting soil, gravel/small pebbles, or even cat litter can be used in place of sandbags. Remember **DO NOT** fill your bags with sand from the beach. If you plan ahead, this will save you time when a storm is approaching. Location and availability of sandbags prior to a storm will be updated as the information becomes available however most local municipalities do not provide sandbags.

Do you live in a hurricane evacuation zone? You might have a day or two to get ready. Have a plan in place of where you and your family will go if you have to evacuate.

Learn your evacuation routes, practice with household, pet, and identify where you will stay. Visit www.floridadisaster.org to learn about evacuation zones in your area.

HURRICANE WATCH

Hurricane conditions are *possible* in the area *within 48 hours*.

vs.

HURRICANE WARNING

Hurricane conditions are *expected* in the area *within 36 hours*.

Have multiple ways to monitor weather alerts and follow instructions from local officials.



FOR MORE INFORMATION VISIT WWW.NHC.NOAA.GOV

KNOW YOUR EVACUATION ZONE!

EVACUATION PLANS

Listen to local officials for evacuation orders and relevant information and do as directed. The amount of time you have will depend on the hazard. For a hurricane, you might have a day or two to get ready. However, many disasters allow no time for people to gather even the most basic necessities, which is why planning ahead is essential, consider the following:

- Plan for delays and multiple stops; keep your gas tank full
- Keep cash on hand in case you need to utilize a transportation service
- Plan to evacuate tens of miles instead of hundreds of miles
- Make sure several people are aware of your evacuation plans
- Know where to find state Evacuation Routes to get on the highway faster. Look for “Evacuation Route” signs which are usually blue and white

SHELTER INFORMATION

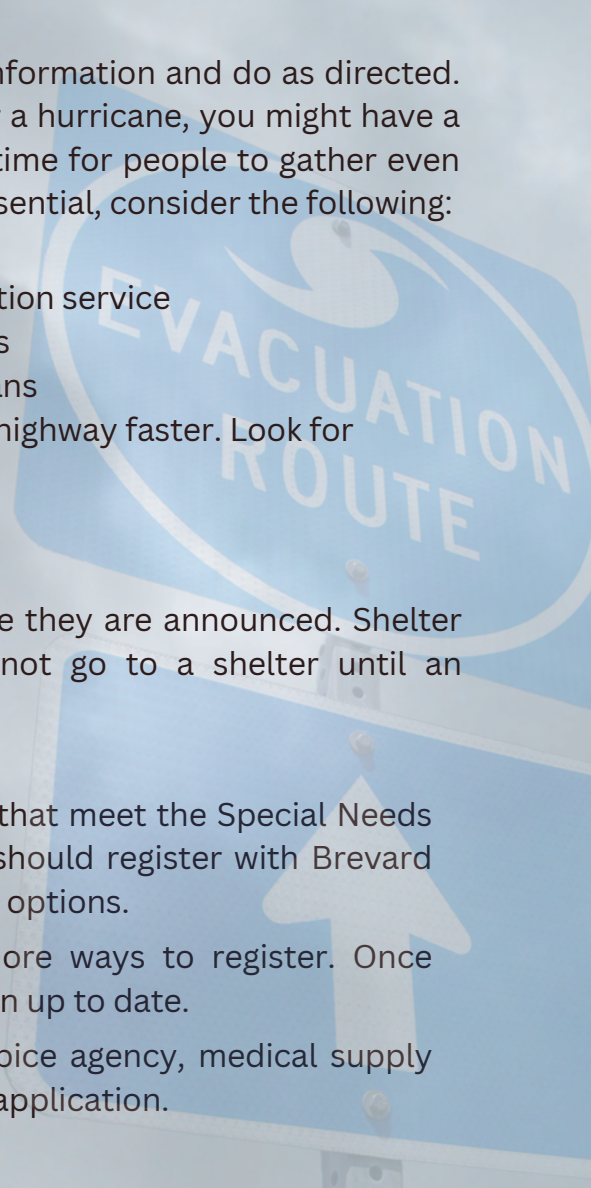
Shelter locations can be found at www.embrevard.com once they are announced. Shelter locations are not released ahead of time so please do not go to a shelter until an announcement has been made that it is open.

Special Needs Shelter

Residents with specific health and/or medical conditions that meet the Special Needs criteria and have no other alternative for a safe shelter should register with Brevard County Emergency Management for Special Needs Shelter options.

Call (321) 637-6670 or visit www.embrevard.com for more ways to register. Once registered, annual updates are required to keep information up to date.

You can also talk to your home health care agency, hospice agency, medical supply company, or caregiver, who can assist with completing an application.



STAY OR GO? EVACUATING FOR A STORM

Having a plan means knowing when you can safely stay and when it's time to go. Here is a helpful guide:

1. Has Brevard County ordered an evacuation?

NO

You can safely shelter in place.

YES

See question 2

2. Do you live in a mobile or manufactured home?

NO

See question 3

YES

GO! Mobile and Manufactured homes are considered zone A and have a mandatory evacuation.

3. Do you live in an evacuation zone?

NO

You will not be ordered to evacuate. Shelter in place and consider hosting friends and family that may need to evacuate.

I don't know

Find your evacuation zone at PBFL.ORG/HURRICANE

YES

See question 4

4. Was your zone ordered to evacuate?

NO

Shelter in place and consider hosting friends and family that may need to evacuate.

YES

It's time to go! When evacuating, it's important to have a plan. Consider the following options when setting your plan.

1. Reach out to family and friends outside the evacuation zone to see if they can host you.
2. Hotels and motels outside of the evacuation zone are great options for evacuating.
3. If you have no other option take shelter in a Brevard County Emergency shelter.

DURING THE STORM

Once the storm arrives, keep everyone safe by staying indoors. Emergency personnel- police officers and firefighters- may not be able to respond to you during the storm.



- Depending on the strength of the storm, you may decide to create a “safe room”, which should be away from windows and doors.
- Keep windows and doors closed at all times.
- If flooding begins, turn off electricity. Keep water from coming into your home by placing towels along windowsills and doors. Have buckets, mops and sponges ready in case of flooding.
- Use flashlights for lighting when the power goes out. **DO NOT** use candles or any other open flames.
- Have a battery-powered radio on hand.
- Open the refrigerator and freezer doors as little as possible to keep cold.
- Use telephone lines as little as possible.
- As the eye of the hurricane passes, there is an unusual calm. **DO NOT** go outside. The storm is not over and could get worse.

Please wait for an all-clear message from the authorities before leaving your residence.



WHAT TO DO AFTER A HURRICANE

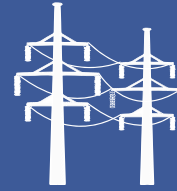
Stay inside until the storm has completely passed

Do not attempt to go outside until the winds have calmed and local officials have deemed that the threat has passed. There will be more debris in the area that could pose a threat if you go outside before the storm has passed.

POST-TROPICAL WEATHER SAFETY PRECAUTIONS



Stay inside until the storm has completely passed



Be aware of downed power lines



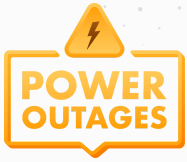
Turn around, don't drown. Keep away from flood waters

Stay out of floodwaters

- Never drive through flooded roadways. Nearly half of all people killed in floods are those who try driving through flooded areas.
- DO NOT drive around barricades, they are there for your protection.
- Never try to walk through or allow children to play around flood water.
- Throw out food that has come in contact with the floodwater and boil drinking water before using it.
- Stay out of buildings that remain in flood waters.
- Do not handle live electrical equipment in wet areas.
- Report broken utilities to correct authorities.



AFTER THE STORM



FPL Outages & Restoration



- FPL doesn't restore power based on when customers report an outage, where customers live or the status of accounts. Rather, they begin in multiple locations and follow an overall plan that calls for restoring power to the largest number of customers safely and as quickly as possible.
- If a hurricane approaches, be prepared to lose power for several days.
- FPL encourages customers to visit www.fpl.com/storm for tips on how to prepare.
- Once the storm is over, visit www.fplmaps.com FPL Power Tracker for updates on power restoration. You can also follow FPL on [Facebook \(Florida Power & Light\)](#) and [X \(@insideFPL\)](#) for updates.
- FPL realizes how disruptive power disturbances can be to your life. If you experience an outage or repeated power problem, visit www.FPL.com/outage or call FPL at 1-800-4OUTAGE (1-800-468- 8243) to report the problem.
- You can download the FPL Mobile App to report or get the latest information on outages. Customers can also get on-the-go, instant and secure access to their accounts. The app is available for download in the iOS App Store and Google Play.



Safety and Electricity

Be cautious of downed power lines following a storm. Debris or standing water may be hiding lines that could be energized and dangerous. Stay away from flooding caused by severe weather events.



Traffic Signals Not Working

When approaching an intersection that has a traffic signal that is not working correctly follow the guidelines below:

- Flashing Red - Treat as a STOP sign
- Flashing Yellow - Proceed with CAUTION
- NO SIGNAL LIGHTS - Treat as a 4-way STOP

UTILITIES, WATER & SEWER SERVICES

A hurricane or other disaster can cause a disruption of your water service. In the event of service interruption due to a hurricane or other disaster, Palm Bay Utilities will notify customers via AlertBrevard notifications. Register to receive AlertBrevard emergency notifications by visiting pbfl.org/news.

Loss of Utilities

If a hurricane is in the forecast, be prepared to be without certain utilities during and after the storm, including; power, water, and wastewater services. A service interruption can last several days depending on the severity and impacts of the storm.

Ways to prepare for electric outages or interruptions:

- Lower the temperature on your thermostat so that your house remains cool as long as possible
- Fill buckets or jugs with water for toilet flushing
- Have flashlights or lanterns out and in multiple rooms for easy access

Water Service

During a hurricane, all residents should be prepared for potential loss of water service and for the possible issue of a Precautionary Boil Water Notice once water service is restored. Prepare by storing water ahead of the storm.

Wastewater

Be prepared to be without wastewater treatment services and/or to strictly limit sewer usage after the storm. Lift stations collect all wastewater runoff from different areas of the county and pump that runoff to the wastewater treatment plant through force mains. Lift stations need power to pump water to the treatment facility. If lift stations lose electricity, a back-up into homes and businesses may occur.

Also, heavy inundation of rainwater from a storm can also put strain on the wastewater treatment service system.

After a hurricane, you may be asked to limit usage of the following:

- Flushing toilets
- Taking showers
- Doing laundry
- Washing dishes
- Or any other activity that sends a lot of water down the drain and into the sewer system



GENERATOR SAFETY



- **Operate generators outdoors** in an area with plenty of ventilation. Never run a generator in a home or garage.
- Generators give off deadly carbon monoxide.
- Do not place generators within 20 feet of an air handler/air intakes.
- Do not plug a generator into the wall to avoid back feed. Use heavy-duty extension cords to connect appliances to the outlets on the generator.
- Turn the generator on before plugging appliances to it. Once the generator is running, turn your appliances and lights on one at a time to avoid overloading the unit. Remember, generators are for temporary usage; prioritize your needs.
- Generators pose electrical risks, especially when operated in wet conditions. Use a generator only when necessary when the weather creates wet or moist conditions. Protect the generator by operating it under an open, canopy-like structure on a dry surface where water cannot form puddles or drain under it. Always ensure your hands are dry before touching the generator.
- Be sure the generator is turned off and cool before fueling it. Keep children and pets away from portable generators. Many generator components are hot enough to burn you during operation.

SHOULD I GET A GENERATOR?

A fuel-powered generator can keep your appliances working after a disaster and keep you more comfortable. You can buy a small one to run your medical equipment, fans and small appliances. But keep in mind, generators come with the dangers of carbon monoxide, electrical shock and fire. Here are some factors to consider when deciding whether to invest in a generator:

Power Outage Risk: Assess the likelihood and duration of power outages in your area during hurricanes. If you frequently experience extended outages, especially if you rely on medical equipment or have specific needs, a generator can provide peace of mind and essential backup power.

Essential Needs: Consider your household's essential needs during power outages. A generator can help keep critical appliances running, such as refrigerators, freezers, medical devices, heating or cooling systems, and communication devices.

Installation and Maintenance: Properly install and maintain your generator to ensure it functions reliably when needed. Follow manufacturer guidelines for installation, regular maintenance, and safety precautions. Consider professional installation for standby generators to ensure compliance with local building codes and safety standards.

REMOVE HURRICANE SHUTTERS

PREVENT FIRE HAZARD

Storm shutters can keep you and your family safe during a hurricane, but did you know they can also trap you in the event of a house fire? Blocked windows not only limit your family's escape routes, but also limit safe entry and exit points for Palm Bay's firefighters.



1 SHUTTERS

Although leaving shutters up through the end of hurricane season may seem proactive, Palm Bay Fire Rescue recommends taking the shutters off your home once the storm passes. Keeping shutters up while there is no hurricane threat can create a fire hazard that has potentially deadly consequences.

2 FIRE SAFETY

Firefighters follow a “vent, enter, search” protocol, which means they will enter room-by-room and search them to ensure everyone is out of the burning structure.

Shuttered and boarded-up windows can hinder this process.



STAY INFORMED

Information is critical before, during, and after a disaster or emergency so be sure to stay informed. The City of Palm Bay has a dedicated hurricane preparedness page at www.palmbayflorida.org/hurricane that includes tips for before, during, and after a storm. You can also sign up for eNotifications to News stories that are posted on the website at: pbfl.org/enews.

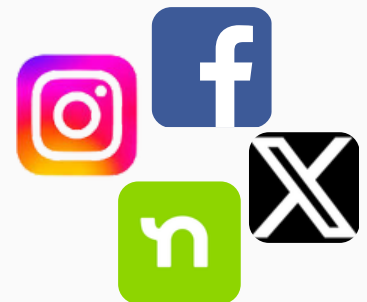
In the event of an emergency, the City of Palm Bay has a citizen hotline number that will be updated with be updated with important information. Add (321) 726-5683 to your contacts to get the latest updates during a storm or disaster.

The City of Palm Bay also uses an emergency notification system known as AlertBrevard to get important alerts to our residents. You can customize the types of alerts you receive and how they are delivered during sign up.

Receive alerts about local emergencies, police and fire notifications, garbage schedules, boil water notices, and news from the City of Palm Bay.

Staying informed is simple, just sign up:

- Visit pbfl.org/news
- Register for 'Emergency Notifications' to receive alerts
- Fill in your info and be sure to select (Palm Bay) for City/Town
- Get notifications based on the addresses you provide
- Choose from telephone, text, or email alerts



For City news and updates,
follow @CityofPalmBayFL on [Facebook](#),
[Instagram](#), [X](#) and Nextdoor.



Using your cell phone, **text BREVARDEOC to 888777**
to sign up for text alerts from Brevard County
Emergency Management.

EMERGENCY NUMBERS



WEB RESOURCES:

www.pbfl.org/hurricane

www.embrevard.com

www.floridadisaster.org

www.nhc.noaa.gov

www.redcross.org

www.fema.gov

AGENCY	NUMBER
EMERGENCY	911
PALM BAY POLICE DEPARTMENT	321-952-3456
PALM BAY FIRE RESCUE HEADQUARTERS	321-409-6300
EMERGENCY INFORMATION HOTLINE	321-726-5683
PALM BAY CITY HALL	321-952-3400
BREVARD COUNTY EMERGENCY MANAGEMENT	321-637-6670
2-1-1 BREVARD COMMUNITY HELPLINE	DIAL 211 OR TEXT YOUR ZIP CODE TO 898211
FLORIDA POWER & LIGHT	1-800-468-8243
BREVARD COUNTY HUMANE SOCIETY	321-636-3343
FEMA HOTLINE	1-800-621-3362

The Atlantic Hurricane Season begins June 1st and runs through November 30th. Although hurricanes have been known to occur outside of these months, these are the dates that were selected to encompass over 97% of tropical activity. Living in Florida, you should always have a plan in place to ensure you are ready if a disaster strikes.

STAY CONNECTED & INFORMED!



WWW.PBFL.ORG/HURRICANE

